

**BEFORE THE KERALA STATE ELECTRICITY REGULATORY
COMMISSION**

IN THE MATTER OF: Review of the KSERC Order dated 2-12-2010 on
'Rationalisation of ToD Tariff for HT-EHT
consumers'.

And

IN THE MATTER OF: Kerala State Electricity Board
Vydyuthi Bhavanam, Pattom,
Thiruvananthapuram - 695 004

The petitioner named above respectfully submits as under:

1. Hon'ble Commission vide the order dated 17-04-2009 on ARR &ERC of KSEB for the year 2009-10 had directed KSEB to file a proposal on rationalization of ToD tariffs for the HT-EHT consumers within two months from the date of the order. Accordingly, KSEB vide its petition dated 24-07-2009 had proposed a simple procedure for ToD tariff as against the then prevailing ToD tariff structure. The summary of the proposal is detailed below.
 - (a) Demand and Energy charges during peak time as 140% and 130% respectively of the normal time charges
 - (b) Demand and Energy charges during off-peak time as 85% and 90% of the normal time charges
 - (c) Excess demand charges for billing demand exceeding contract demand is proposed as 100% on the normal demand charges.

While making the proposal, KSEB had made a study on the proposed ToD tariff with the actual zone wise consumption for the year 2007-08 and

made to ensure that, either KSEB or consumers would not earn any extra benefit through the change in the ToD revision proposal. The details of the study report was also furnished before the Hon'ble Commission during the proceedings of the petition on rationalization of tariff.

2. Hon'ble Commission vide the order dated 2nd December-2009 on petition TP No. 66 of 2009 had revised the TOD tariff for HT-EHT consumers with certain modifications as detailed below.

Table-1. Comparison of the ToD tariff proposed by KSEB and approved KSERC

Particlars	Rates proposed by KSEB (% of Ruling Charges)			Rates approved by KSERC (% of Ruling Charges)		
	Normal period (6:00 hrs to 18:00 hrs)	Peak period (18:00 hrs to 22:00 hrs)	Off peak (22:00 hrs to 6:00 hrs)	Normal period (6:00 hrs to 18:00 hrs)	Peak period (18:00 hrs to 22:00 Hrs)	Off peak (22:00 hrs to 6:00 hrs)
Demand Charges	100%	140%	85%	100%	140%	80%
Energy Charges	100%	130%	90%	100%	130%	85%

Hon'ble Commission has allowed the reduced off-peak demand charges for the excess demand during off-peak period up to 130% of the Contract Demand (CD) as against 120% of the CD prevalent as per the pre-revised tariff. Further, the rate of penalty when the billing demand exceeds the Contract Demand (CD) is allowed at 50% of the normal demand charge as against 100% proposed by the Board in view of the provision in the Electricity Act-2003 for unauthorized use of Electricity.

3. As detailed above, Hon'ble Commission had allowed a reduction of 5% on the demand and energy charge during off-peak hours from the rates proposed by KSEB. Hon'ble Commission had also enhanced the limit of excess demand at incentivised tariff during off-peak hours from 120% of the CD to 130%. Further, the penalty for excess demand charges had

reduced to 50% of the normal demand charges against 100% as proposed by the Board based on the provisions in the Electricity Act-2003.

4. As directed by the Hon'ble Commission, KSEB had implemented the revised the ToD tariff from Jan-2010 onwards. On account of the revised ToD tariff as ordered by the Hon'ble Commission, KSEB has a substantial revenue loss since the month of Jan-2010. The details are given below.

Table-2. Comparison on the shortfall in revenue due to the revised ToD tariff

Tariff Category	No of consumers	Demand Charge				Energy Charge				Total reduction (Rs.Cr)	Total reduction (%)
		Pre-revised tariff	As per KSERC order	Revenue short fall	Percentage of reduction	Pre-revised tariff	As per KSERC order	Revenue short fall	Percentage of reduction		
		(Rs.Cr)	(Rs.Cr)	(Rs.Cr)	(%)	(Rs.Cr)	(Rs.Cr)	(Rs.Cr)	(%)		
Jan-2010											
EHT (I & II)	35	5.77	5.58	-0.18	-3.19	31.61	30.82	-0.79	-2.50	-0.98	-2.61
EHT PI	2	0.18	0.17	-0.01	-5.69	0.91	0.89	-0.02	-2.24	-0.03	-2.82
HT I	887	7.98	7.40	-0.59	-7.35	26.37	25.78	-0.59	-2.25	-1.18	-3.43
HT II	148	1.25	1.04	-0.21	-16.65	2.98	2.93	-0.05	-1.83	-0.26	-6.21
HT I PI	30	1.75	1.63	-0.12	-7.04	8.62	8.43	-0.18	-2.12	-0.31	-2.95
HT IV	1392	7.82	7.05	-0.77	-9.85	23.76	22.87	-0.89	-3.75	-1.66	-5.26
Total	2494	24.75	22.87	-1.88	-7.61	94.25	91.72	-2.53	-2.69	-4.42	-3.71
Feb-2010											
EHT (I & II)	35	6.08	5.62	-0.46	-7.60	28.46	27.68	-0.77	-2.71	-1.23	-3.57
EHT PI	2	0.19	0.17	-0.01	-7.43	0.87	0.85	-0.02	-2.13	-0.03	-3.08
HT I	908	8.16	7.54	-0.62	-7.60	25.15	24.56	-0.59	-2.35	-1.21	-3.64
HT II	152	1.33	1.10	-0.23	-17.18	2.89	2.86	-0.03	-1.09	-0.26	-6.16
HT I PI	30	1.75	1.63	-0.12	-6.94	7.61	7.50	-0.11	-1.45	-0.23	-2.48
HT IV	1414	7.99	7.20	-0.79	-9.94	22.56	21.72	-0.83	-3.69	-1.63	-5.32
Total	2541	25.51	23.27	-2.24	-8.78	87.53	85.18	-2.36	-2.69	-4.60	-4.07
Mar-10											
EHT (I & II)	37	6.16	5.74	-0.41	-6.70	32.49	31.40	-1.08	-3.33	-1.49	-3.87
HT I	911	8.29	7.60	-0.70	-8.39	25.63	25.05	-0.58	-2.26	-1.28	-3.76
HT II	154	1.39	1.15	-0.23	-16.84	3.24	3.18	-0.05	-1.67	-0.29	-6.23
HT I PI	31	1.73	1.58	-0.15	-8.64	7.51	7.42	-0.09	-1.22	-0.24	-2.61
HT IV	1436	8.43	7.56	-0.87	-10.34	25.55	24.62	-0.93	-3.64	-1.80	-5.30
Total	2569	26.00	23.64	-2.36	-9.09	94.41	91.67	-2.74	-2.90	-5.10	-4.24
Total for 3 months		76.26	69.77	-6.49	-8.51	276.20	268.57	-7.63	-2.76	-14.11	-4.00

5. As detailed above, KSEB had a total reduction of about 4% on the revenue by implementing the tariff order dated 2nd December-2009 of the Hon'ble Commission. But, had the Hon'ble Commission approved the

- TOD tariff as proposed by the Board, the financial impact on KSEB would have been neutral.
6. Based on the KSERC order dated 2nd December-2009, Hon'ble Commission vide the letter No. KSERC/III/ T&C of supply/2010/ 138 dated 11-02-2010 had forwarded the approved 'Schedule of Tariff and Terms and Conditions for retail supply by KSEB w.e.f 01-01-2010. In the schedule of Tariff approved, Hon'ble Commission had allowed an additional incentive in tariff during off-peak period through granting 80% of the normal demand charge for the entire off-peak demand disregarding the ceiling limit of 130% of the CD as per the order dated 2nd December-2009. As per order dated 2-12-2009, if the off-peak billing demand of a consumer exceeds 130% of the CD, the excess demand over 130% of the CD is allowed to charge at the normal demand charge plus of 50% of the normal charge as excess demand charge. But as per the schedule of tariff approved, even when the off-peak billing demand exceeds 130% of the CD, the entire billing demand is allowed to charge at the reduced tariff of 80% of the normal demand charge. KSEB vide its letter dated 02-03-2010 had brought this discrepancy before the Hon'ble Commission for making suitable amendments. But, Hon'ble Commission vide the letter No. KSERC/III/ T&C of Supply/2010/339 dated 5-04-2010 communicated that, appropriate modifications in the billing procedures can be made after assessing the revenue implications, impact of load shifting etc as per the study report of KSEB on the revised ToD tariff.
 7. Further, Hon'ble Commission had made certain changes in the billing procedures for excess demand charges proposed by KSEB. A comparison of the billing procedures for excess demand charges proposed by KSEB and the same approved by KSERC is given below.

Table-3. Comparison of the billing procedures proposed by KSEB and approved by Hon'ble Commission for charging excess demand

KSEB proposal	KSERC approval
<p>Demand Charge in each time zones</p> <p>(a) in Time Zone (T1), Dc1 = BMD1 x D x (12/24)</p> <p>(b) in Time Zone (T2), Dc2 = BMD2 x D x 1.4 (4/24)</p> <p>(c) in Time Zone (T3), Dc3* = BMD3 x D x 0.80 x (8/24)</p> <p>(*Incentive is applicable for excess demand only upto 30% of the CD during time zone- T3)</p>	<p>Demand Charge in each time zones</p> <p>(a) in Time Zone (T1), Dc1 = BMD1 x D x (12/24)</p> <p>(b) in Time Zone (T2), Dc2 = BMD2 x D x 1.4 (4/24)</p> <p>(c) in Time Zone (T3), Dc3 = BMD3 x D x 0.80 x (8/24)</p>
<p>Excess Demand Charges in each time zone</p> <p>(a) in Time Zone (T1), Ed1 = (RMD1-CD) x 0.5x D</p> <p>(b) in Time Zone (T2), Ed2 = (RMD2-CD) x 0.5x D</p> <p>(c) in Time Zone (T3), Ed3 = (RMD3-1.30 x CD)x1.5x D</p> <p>(d) Total Excess Demand Charge (ED) = Ed1+Ed2+Ed3</p>	<p>Excess Demand for HT& EHT consumers in each time zone shall be</p> <p>(a) in Time Zone (T1), Ed1 = (RMD1-CD)</p> <p>(b) in Time Zone (T2), Ed2 = (RMD2-CD)</p> <p>(c) in Time Zone (T3), Ed3 = {RMD3-(1.30 x CD)}</p> <p>Total Excess Demand Charge (ED) = Excess demand Ed1, ED2 or ED3 whichever is higher x 0.5 x D</p>

Hon'ble Commission may kindly note that, KSEB had proposed the revision in ToD tariff with the prime objective of reducing the peak demand by shifting the same to off-peak period. Accordingly, as per the the billing procedures proposed, KSEB had proposed to impose penalty for excess demand for the three time zones separately as follows.

- (a) Excess demand charges may be charged for normal time and peak time when the billing demand exceeds Contract Demand and
- (b) Excess demand charges during off-peak period may be charged when the billing demand exceeds 1.30 x CD.

However, as per the billing procedures approved by the Hon'ble Commission as detailed above, the excess demand charges can be claimed only for one of the three time zones- normal, peak or off-peak hours. As per the approved billing procedures, even though there is excess demand during peak hours/ normal time and if there is more increase in excess demand during off-peak hours, the consumers will not

be liable to pay any excess demand charges for the excess consumption during normal/ peak period. This will over shadow the basic purpose of ToD structure motivating the consumers to reduce the demand during peak and day time. This anomaly is also need to be corrected.

Study on the load shifting due to the revised ToD tariff

(a) Pattern of Energy consumption of HT&EHT consumers

8. KSEB had analyzed the time zone wise energy consumption of HT & EHT consumers for the months of December-2009 to March-2010 with the same during the previous year 2007-08 and 2008-09. A comparison of the zone wise consumption for EHT1, EHT2 and HT consumers for the months of Dec to March for the years 2007-08, 2008-09 and 2009-10 are given as Annexure-1, Annexure-2 and Annexure-3. The time zone wise consumption of EHT1, EHT2 and HT categories of consumers as a percentage of total consumption for the months of December to March for the years 2007-08 to 2009-10 is given in the following table.

Table-4. Comparison of time zone wise energy consumption of HT&EHT consumers

Month	EHT1			EHT2			HT category		
	Normal Time	Peak Time	Off-peak time	Normal Time	Peak Time	Off-peak time	Normal Time	Peak Time	Off-peak time
	(% of total)	(% of total)	(% of total)	(% of total)	(% of total)	(% of total)	(% of total)	(% of total)	(% of total)
Dec-07	50.97	15.94	33.09	50.60	14.01	35.38	55.93	13.58	30.49
Dec-08	52.42	14.60	32.98	50.62	13.54	35.85	56.25	11.74	32.01
Dec-09	51.35	15.27	33.38	49.52	14.86	35.62	55.79	13.56	30.64
Jan-08	51.81	15.63	32.56	50.31	14.17	35.52	57.50	12.15	30.35
Jan-09	51.98	15.35	32.67	49.88	15.11	35.01	56.75	11.72	31.53
Jan-10	52.03	15.01	32.96	49.54	14.94	35.51	55.97	13.63	30.41
Feb-08	51.64	15.88	32.48	50.34	14.39	35.27	56.25	13.37	30.38
Feb-09	51.97	15.57	32.47	50.55	14.18	35.27	57.21	11.34	31.45
Feb-10	51.50	15.36	33.15	49.52	14.93	35.55	56.32	13.38	30.30
Mar-08	51.24	15.35	33.40	51.16	14.40	34.44	57.37	13.39	29.24
Mar-09	51.08	15.18	33.74	50.30	14.09	35.61	55.93	12.35	31.72
Mar-10	50.81	15.53	33.66	49.93	13.92	36.16	56.88	13.41	29.71

9. Graphical representation of the time zone wise energy consumption of EHT1, EHT2 and HT categories are given in the following charts.

Chart-1
EHT1- Category
 (Zone wise energy consumption- as percentage of total)

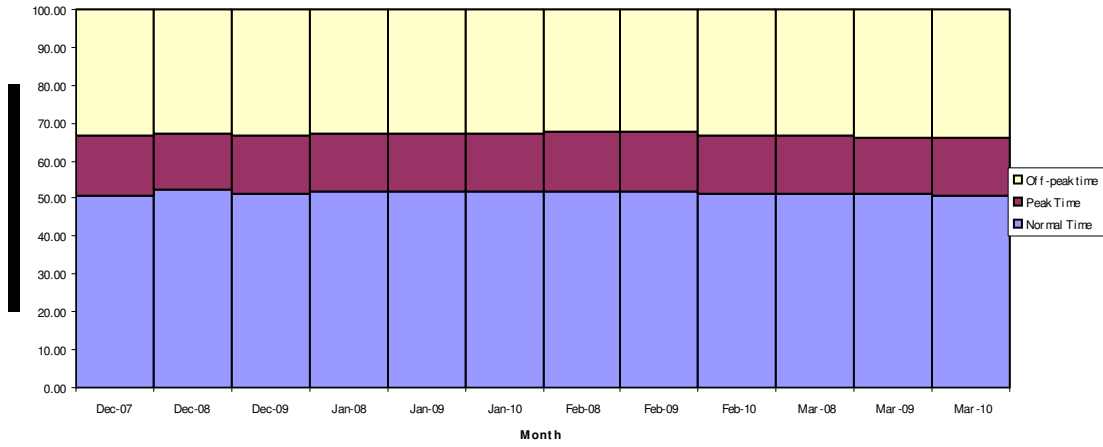


Chart-2
EHT2- Category
 (Zone wise Energy Consumption- as percentage of total)

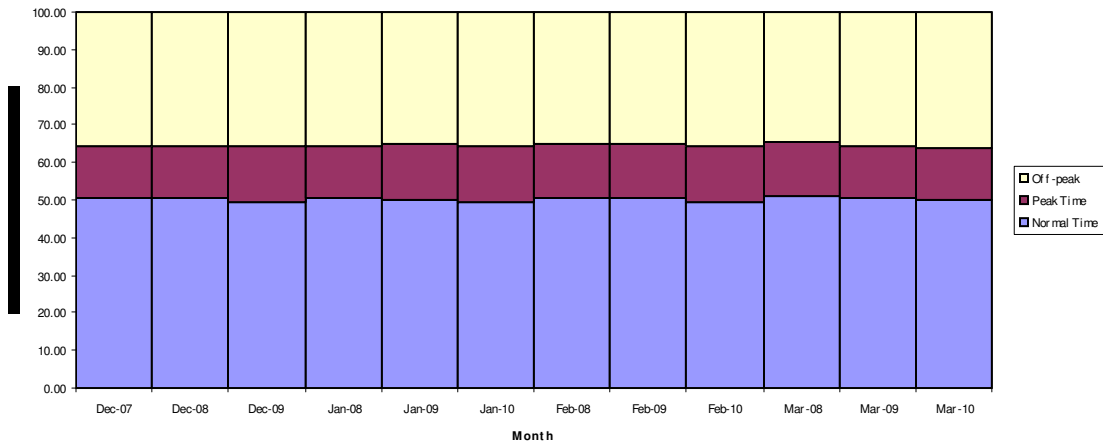
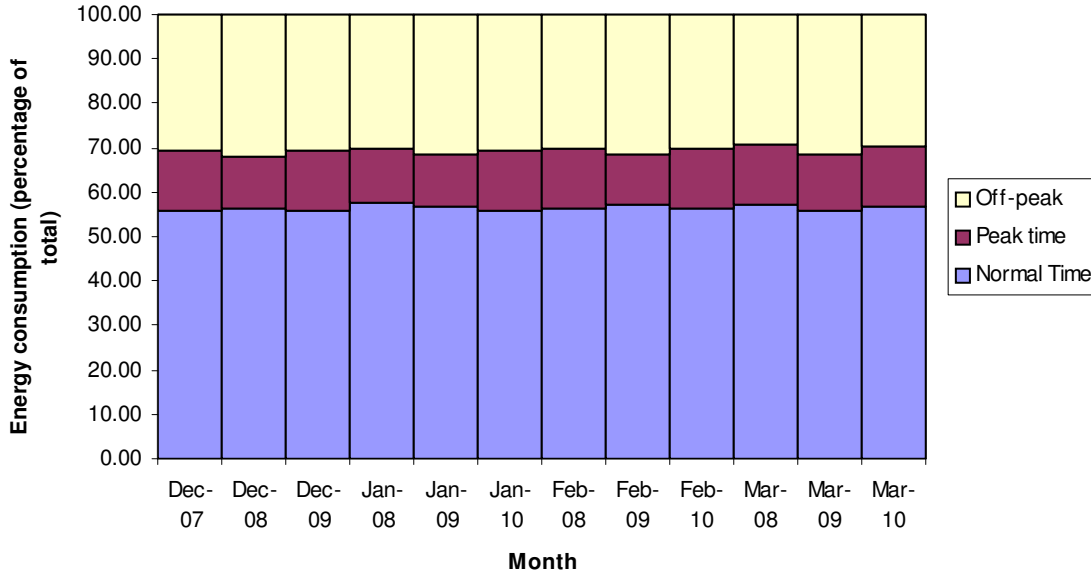


Chart-3
HT Category
 (Zone wise energy consumption- as a percentage of total)



10. It can be observed from the above Table-4 and charts-1 to 3 that, during the period from December to March for the years 2007-08 to 2009-10, the peak consumption of EHT1 categories varies between 14.60% to 15.88% of the total consumption, EHT2 category varies between 13.54% to 15.11% and that of HT categories varies between 11.34% to 13.58%. It is also observed that, even after the revised ToD tariff, there was no appreciable change or shift in the consumption pattern of the EHT and HT categories of consumers. Accordingly, KSEB did not have any benefit through reduction in peak consumption as the consumers did not shift the demand from peak to off-peak period.

Changes in the daily load pattern of KSEB system

11. KSEB had studied the system load after the implementation of the revised ToD tariff. The variation of average daily load curve of the KSEB system for the months of Jan-10 to Mar-10 with that of the

corresponding months of the previous years 2007-08 and 2008-09 were studied in detail. The average daily load curve for the months of January, February and March for the years 2007-08 and 2008-09 and 2009-10 is given below.

Chart-4
Daily Load Curve for the month of January

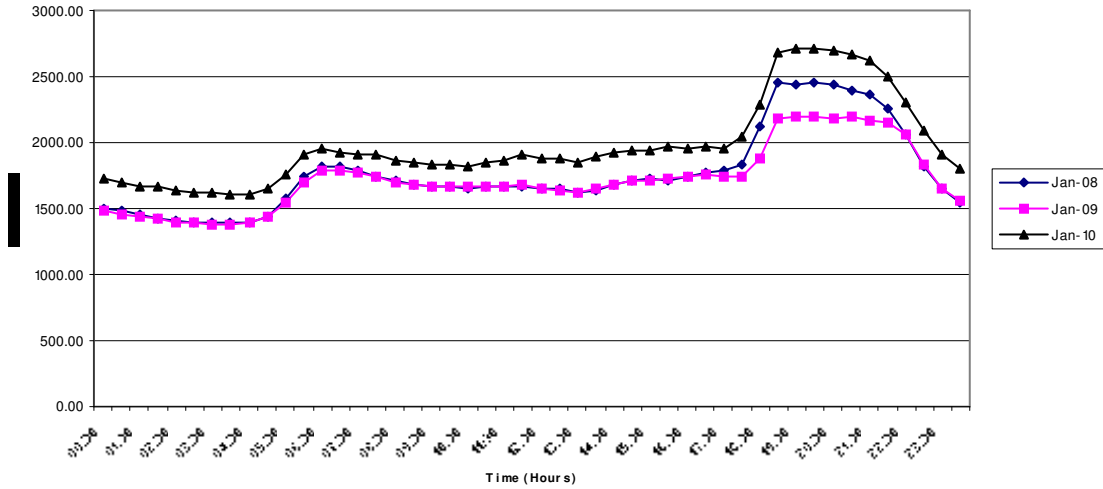


Chart-5
Daily Load Curve for the month of February

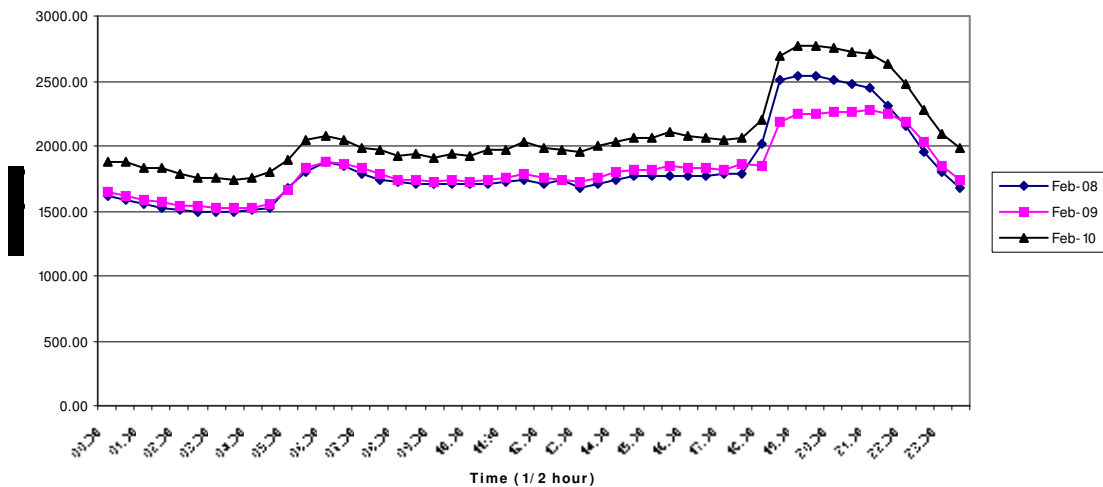


Chart-6
Daily Load Curve for the month of March

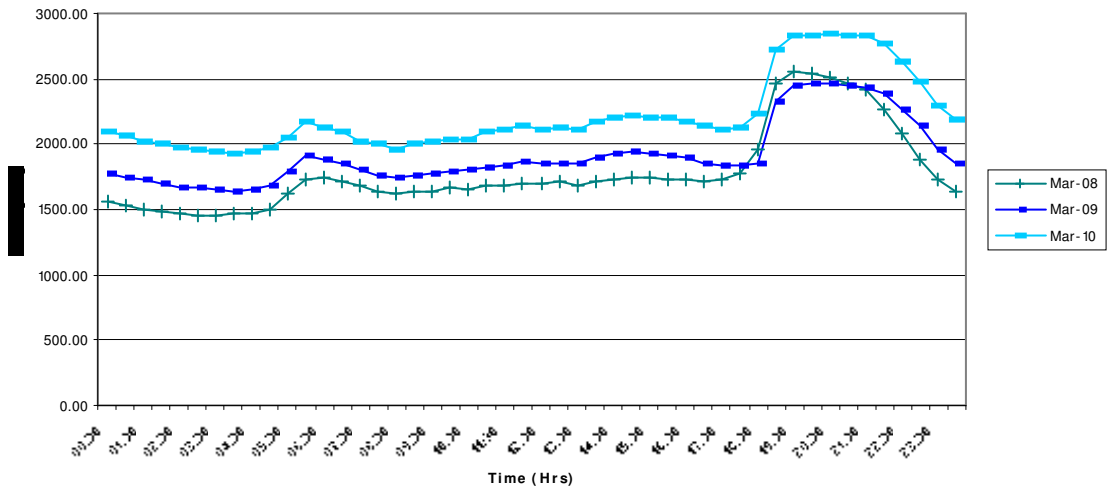
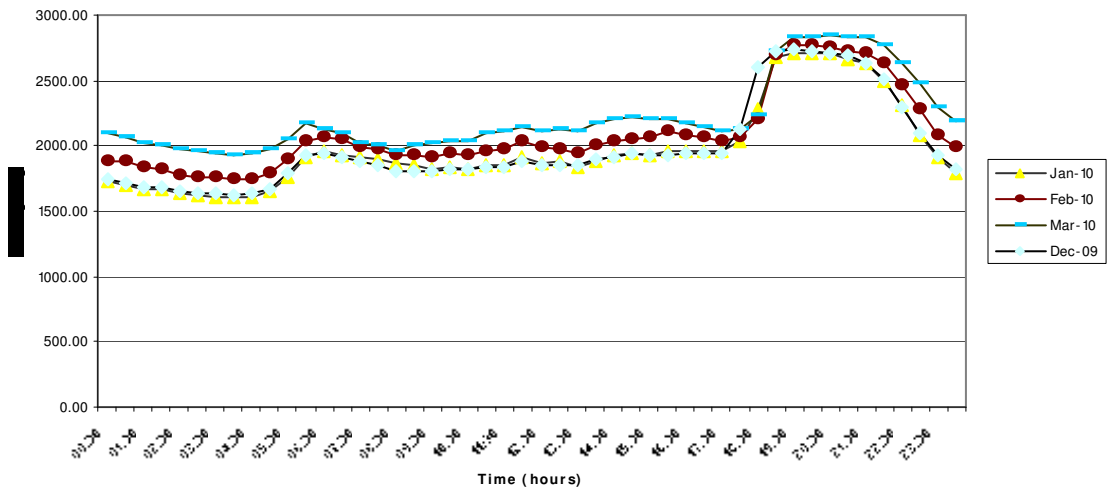


Chart-7
Daily Load Curve- Dec-09, Jan to Mar-2010



12. Hon'ble Commission may please note that, there was no appreciable shift of peak demand to the off-peak or variation in daily load curve after revising the TOD tariff w.e.f 01-01-2010. The month over month variation in load curve is only on account of the increase in energy demand. It may also be noted that, due to the power restrictions during the year 2008-09, KSEB was able to contain the system demand during normal and off-peak time for the month of January and February 2009 as that of the previous year.

13. From the above studies, it is concluded that there was no appreciable change in the consumption pattern of the HT&EHT consumers after implementing the revised ToD tariff w.e.f January-2010. Further, KSEB has also not experienced any reduction in the peak demand by way of shifting a part of the peak demand to the off-peak demand, but the tariff modification initiated by the Hon'ble Commissions has only resulted in passing on huge unnecessary benefit to HT&EHT consumers at the cost of KSEB. Hence, considering the huge revenue reduction of about 4% from pre-revised tariff, KSEB may request before the Hon'ble Commission to suitably modify the present TOD tariff as proposed by KSEB through the earlier petition TP 66 of 2009 or retain the pre-revised ToD, simultaneously taking suitable measures to recoup the losses from the same set of consumers.

14. The impact of the revised ToD tariff on KSEB is summarized as:
 - (i) KSEB had incurred a total revenue loss of Rs 14.11 crore for three months from January-2010 to March-2010 on account of revised ToD tariff as per the KSERC order dated 2-12-2009.
 - (ii) The monthly revenue short fall was about 4% on the total revenue at the pre-revised rates.

- (iii) The HT&EHT consumers of the State has not made any change in the consumption pattern after implementing the revised ToD tariff w.e.f January-2010.
- (iv) KSEB has not been benefited with any appreciable reduction in peak demand by way of shifting a part of the peak demand to off-peak period.

Prayer

KSEB humbly prayed before the Hon'ble Commission that:

Considering the huge financial loss on account of the revised TOD tariff and also considering the fact that there was no appreciable system benefit on KSEB due to the revised ToD tariff, Hon'ble Commission may either:

- (i) Restore the pre-revised ToD tariff which was continued till December-2009

OR

- (ii) Approved the ToD tariff structure as proposed by KSEB vide its Petition No. TP No. 66 of 2009 on rationalization of KSEB tariff.
- (iii) Issue appropriate orders by the Hon'ble Commission to recoup the losses already incurred by KSEB, from the same set of consumers.

Chief Engineer (Commercial & Tariff)

Annexure-3

Month wise energy consumption details of HT Category (units)

	HT I	December-07			December-08			December-09			January-08			January-09			
		Zone-A	Zone-B	Zone-C	Zone-A	Zone-B	Zone-C	Zone-A	Zone-B	Zone-C	Zone-A	Zone-B	Zone-C	Zone-A	Zone-B	Zone-C	
4/4129	A.C. POLYMER INDUSTRIES	HT I	47826	16323	33216	46710	14931	34932	34056	11832	24825	32157	11613	25773	27906	9096	20427
1/154	A.P. STEEL RE-ROLLING MILLS	HT I	504736	32704	407232	353408	12160	372160	604608	36384	414144	619424	25280	454848	335936	10880	382368
4/419	ACHOOR ESTATE	HT I	42410	8780	19780	94320	24020	63080	63680	17940	36930	39280	6260	5380	93920	16670	24180
7/4577	ACTIVE CHARIS PVT LTD	HT I	24468	8408	17304	24548	7684	18904	32140	12256	24072	22516	7296	15864	20504	6664	15980
31/3314	AGWOOD ANDAMAN TIMBER INDUSTRIES	HT I	46164	6390	11268	40548	4860	8520	39408	5484	9888	44400	4542	8610	26262	1302	1896
13/1331	AHAMMED ROLLER FLOUR MILLS (P)LTD	HT I	40602	1923	25779	34026	1947	20964	46002	5487	30507	41232	1716	19365	42396	1593	21354
7/3752	AISWARYA STEELS PVT. LTD.	HT I	31482	9024	5676	41382	1020	13704	47610	6018	8874	38268	8970	8358	39702	1050	13344
19/4279	AKAY FLAVOURS & AROMATICS PVT. LTD.	HT I	29356	9440	19496	17108	4728	10256	36464	10876	23740	48216	16168	31964	34676	9580	21956
26/2667	AKAY FLAVOURS AND AROMATICS LTD	HT I	60534	19482	33840	48228	13554	27285	57843	18357	32907	58863	16077	33969	52026	13674	30180
10/3999	AKG MEMORIAL PRINTING& PUBLG CO (P) LTD,	HT I	5448	1876	7044	6136	2526	11886	8180	2608	12918	7830	2286	8212	8276	2384	13550
29/4508	AL AMEEN CRUSHER	HT I	18076	328	480	26008	1108	1204	29888	776	828	18596	452	712	25396	1196	1376
7/712	ALAGAPPA TEXTILES LTD. (NTC)	HT I	509460	161640	312060	450330	130560	288330	541230	172920	330870	556020	171690	356400	508980	141330	322470
5/530	ALAMPALLY BROTHERS LTD	HT I	24747	4080	4917	23412	6774	7794	32871	11100	12300	28674	6585	7362	22911	6564	8178
31/4566	ALLEPPEY COMPANY LTD	HT I	18520	5996	5282	6820	1864	2954	10260	3092	4416	14232	4654	5336	7104	1516	2922
25/4526	ALLEPPEY LATEX (P) LTD.	HT I	17548	6456	13458	3120	420	406	13950	5156	9680	13904	4822	10780	2180	512	386
2/3561	ALLEPPEY CO-OP SPINNING MILLS LTD	HT I	96960	27372	59832	72936	19350	41622	185808	46878	99216	92988	14082	52482	73920	18858	43524
15/1958	ALLIANCE GRAIN PRODUCTS (P) LTD	HT I	48135	4494	1683	36870	963	579	46857	2652	1875	45423	3681	3237	34731	651	603
32/3482	AL-MADEENA GRANITE METAL& CEMENT FACTORY	HT I	8958	96	450	5388	384	300	10437	993	540	8094	96	246	5763	543	1005
9/3873	ALPHS VENEERS,TALAPADY	HT I	2950	476	760	1742	364	812	5974	1106	1002	3764	396	782	830	340	778
8/4307	ALWAYE METALS & ALLOYS PVT LIMITED	HT I	17586	13230	30174	48072	9702	13251	17538	5964	12945	53157	3516	8205	39231	10194	7464
21/2114	ALWAYE RUBEX (P) LTD	HT I	53108	17768	32032	44644	11296	13240	55492	17192	30524	57840	18848	34496	53140	15100	28868
20/2034	ALWAYE TECHNO RUBBERS	HT I	29922	11826	22560	26736	1896	19362	26712	1854	23112	29856	10938	25824	26664	1362	19710
6/621	AMBANAD ESTATE	HT I	5130	1506	1683	1779	816	1020	5994	2190	1524	4905	1311	1659	1764	807	1173
6/3728	AMRUT DISTILLERIES LTD.	HT I	11650	1304	938	7942	642	1124	7448	632	1038	11560	806	946	5688	472	932
28/2858	ANAND OIL & EXTRACTIONS LTD.	HT I	12498	4695	9765	15429	1029	11367	12504	4467	9489	14577	3225	11121	15162	1074	11598
14/1420	ANAND WATER METER MFG CO (27/14/1420)	HT I	4644	63	126	3828	66	129	6810	69	246	5760	72	138	4557	69	162
18/4557	ANNS IND FLAVOURS	HT I	519	216	459	2277	297	597	7986	706	444	732	198	474	1182	270	549
4/414	ARAPETTA ESTATE	HT I	33528	11560	15016	46168	13356	22976	49756	13296	22180	28240	8540	11136	24520	5964	9328
17/3941	ARCH PLY N BOARDS	HT I	26786	7970	15720	24454	5532	6912	30356	8250	15994	30846	8670	18132	24758	4274	3986
27/3391	ARIKKAT OIL INDUSTRIES	HT I	570	249	540	522	120	255	2229	921	1851	591	249	558	1041	222	450
18/4183	ARJUNA NATURAL EXTRACTS LTD.	HT I	15118	5004	9254	18412	5658	12106	15932	5082	8946	19596	5416	10870	19200	5052	12068
17/1551	ARKAY ARC INDUSTRIES	HT I	5624	132	1674	5378	84	346	5254	110	808	5382	94	822	4346	84	346
18/1038	ARNAKAL ESTATE	HT I	93702	17790	53934	137424	34506	79998	112266	37914	77046	111234	22086	56472	109356	26040	56964
25/4313	ARYA VAIDYA PHARMACY(COIMBATORE) LTD	HT I	15810	5066	9350	18760	998	10852	47560	6848	9700	17384	5248	9594	17070	770	8768
10/4042	ASHIQUE CHEMICALS AND COSMETICS	HT I	27129	11286	5250	27303	3813	9042	21063	2292	1089	21135	7149	3573	26760	4869	9993
13/3277	ASHIQUE EXPORTS (P) LTD	HT I	9672	3414	6420	15096	4362	9018	14826	2280	1566	10974	3558	3690	13776	4482	8568
30/3117	ASPINWAL (TRAVANCORE) LTD	HT I	3075	633	996	2454	483	900	3348	666	969	3267	705	1008	2865	543	948
13/1361	AVT NATURAL PRODUCTS LTD	HT I	130820	41820	71650	145180	40970	75110	138990	48510	90700	135220	30250	74430	150070	57210	71140
5/518	BALIAPATTAM TILE WORKS	HT I	34710	4803	4212	31551	2217	4059	13890	1503	2745	37680	4434	4131	33153	2172	3852
15/4645	BENZY FOODS AND BEVERAGES PVT LTD	HT I	12044	1900	1388	4878	1236	9282	11770	1606	2110	14796	2226	1558	4016	916	10740
31/3419	BERTECH (P) LTD	HT I	32340	9135	19347	25272	7473	17403	18999	7113	9456	32184	9357	19440	38583	9513	23655
26/2625	BEST BRICKS & TILES	HT I	11358	6	585	8871	159	432	10419	171	435	13608	171	549	8886	168	444
11/4124	BEST GRANITES, KOTHACHIRA	HT I	79416	5864	3304	99336	8152	5424	109460	18102	10742	94976	6584	3576	99456	7136	4256
4/4604	BEST READY MIX	HT I	7780	1370	1564	7758	1548	1554	7654	1604	1528	7642	2060	1846	7026	1546	1362
31/3430	BETA GRANITE PVT LTD	HT I	8074	150	314	8616	164	314	8706	180	332	8560	138	282	10000	174	304
29/2946	BHARATHY RUBBER INDUSTRIES	HT I	333	96	192	348	84	189	1317	135	207	309	93	192	354	87	198
32/3533	BHAVANI TEA & PRODUCE CO. LTD.	HT I	5196	1992	3531	7974	2292	4968	7641	2355	3603	6420	1827	3363	5199	1329	3054
15/1512	BINANI INDUSTRIES(P)LTD	HT I	8036	2516	6040	6890	2044	4984	4684	1402	2976	8310	2214	5846	6748	2136	4960
20/3913	BODY GEAR INTERNATIONAL (PVT) LTD	HT I	14085	315	555	12597	258	528	13140	306	591	15462	318	573	13425	249	522
8/718	BOYCE ESTATE	HT I	11116	2076	1622	14776	1028	2180	15092	1214	3172	10368	964	2040	12966	846	1378

Annexure-3

Month wise energy consumption details of HT Category (units)

		December-07			December-08			December-09			January-08			January-09			
		Zone-A	Zone-B	Zone-C	Zone-A	Zone-B	Zone-C	Zone-A	Zone-B	Zone-C	Zone-A	Zone-B	Zone-C	Zone-A	Zone-B	Zone-C	
26/2639	BPL INDIA LTD	HT I	7704	600	1016	5990	512	1046	15646	1410	1952	8230	1006	1350	6568	568	1128
10/904	BPL LIMITED	HT I	26932	7388	12788	42020	11868	23576	26976	8228	12980	24300	6848	9868	30632	8660	16784
26/2640	BPL SYSTEMS & PROJECTS LTD	HT I	46056	8010	12366	49266	7914	13194	40728	7812	13770	49830	7560	12030	47478	7368	12390
27/4480	BRAHMINS ENTERPRISES	HT I	3608	236	372	7646	228	1250	9626	590	790	3506	190	402	3760	232	1292
28/2815	BRISTOL BOATS	HT I	1592	248	464	1340	224	428	1500	236	472	1560	220	432	1576	232	460
11/1934	BROTHERS RUBBER MILLS	HT I	6850	104	5548	7402	90	5436	9314	142	6812	8600	120	7168	7558	104	5966
10/1025	CALICUT TILE CO.	HT I	24783	495	1122	23631	432	1059	23442	483	954	23640	432	933	25647	459	999
4/450	CALIFER POLYMERS (P) LTD	HT I	23712	5226	8451	20319	1638	5055	23268	6705	10632	20718	4884	8196	26934	3036	11454
7/641	CANARA PAPER MILLS LTD.	HT I	64386	22206	47304	57090	16206	39576	44478	14082	28014	63918	20022	46926	46728	12654	32226
5/515	CANNANORE CO-OPERATIVE SPINNING MILLS	HT I	210516	59016	112416	214836	58656	117084	223512	71748	117672	212664	63072	118632	222552	59472	121848
25/3994	CHAKKIATH MOODA AGRO PRODUCTS	HT I	34662	8304	25149	32478	10785	24597	42732	14508	31410	43194	14976	32706	35817	11496	27243
25/3283	CHAKKIATH MOODA EXTRACTIIONS	HT I	23088	7252	13500	18060	5556	11104	22208	7548	13576	24540	8128	15160	17396	5324	10940
5/523	CHANDANAPALLY ESTATE	HT I	27843	8736	10707	25077	7551	11727	24399	7611	10998	26697	8418	11043	23334	7377	11391
5/510	CHANDRAMALAI ESTATE	HT I	23166	3330	1722	33308	8644	8204	34280	7208	4444	25038	2964	1896	21432	2032	1424
7/3632	CHARANKATTU COIR MFG. CO. (P) LTD	HT I	4176	232	604	5249	703	992	4692	624	924	3744	452	520	2868	400	640
21/3382	CHEERAMALLI EXTRUSIONS (P) LTD	HT I	8904	2820	6036	7932	894	4158	7038	2694	4860	12258	3744	8568	8490	1884	4614
4/422	CHEMBRA PEAK ESTATE	HT I	2850	1422	1476	3192	1464	1416	2946	1386	1302	2748	1272	1350	2958	1302	1386
16/1607	CHIDAMBARAM TEA ESTATE	HT I	30738	4494	5736	25539	3015	3315	22347	3321	10095	27168	3837	6504	25848	2847	2733
10/4055	CHINTHA PRINTING & PUBLISHING CO PVT LTD	HT I	5462	2236	5760	6330	2322	7782	5984	2546	7308	5490	2208	6012	6218	2382	8930
32/3524	CHIRACKAL AGRO MILLS	HT I	27852	7384	11988	24171	6807	12408	27126	9417	13419	24712	7248	13272	24582	7011	12030
13/3992	CHIRAYINKEEZHU-ANJENGO COIR MATS&MATTING	HT I	3564	261	537	2151	189	510	2097	231	447	5424	315	573	2220	192	495
5/4213	CHLOROPLAST	HT I	27410	7930	17982	28382	8144	20772	29892	9472	19156	29214	8896	19190	25848	7298	17092
4/420	CHULLIKA ESTATE	HT I	46261	6925	23294	71485	9074	45128	51608	7851	35047	51386	5862	29925	35092	3562	6735
4/415	CHUNDALE ESTATE	HT I	96330	21880	21590	57450	13040	21900	51200	15380	30760	88740	18590	19390	31880	7670	10030
22/2262	COCHIN CEMENTS LTD (31/22/2262)	HT I	1860	1720	5060	79320	4880	73800	74780	5340	58840	88760	5220	60460	93100	5260	91840
31/3306	COCHIN KAGAS LTD	HT I	113640	35680	64980	139470	37530	75440	61790	20610	36740	185470	56470	108120	143530	40730	77310
7/3948	COCHIN KAGAZ LTD. UNIT-II	HT I	190260	70872	142284	259428	75140	184808	165672	78182	139438	170760	50280	120120	103818	30862	66742
22/3272	COCHIN MALABAR ESTATES&INDUSTRIES(31/22)	HT I	10016	3016	7428	10996	354	6390	11288	3334	6852	11674	3448	8076	9898	566	5656
18/1856	COCHIN MINERALS & RUTILE LTD	HT I	216408	72660	155892	243492	74676	174168	193716	70968	142536	225144	74748	156264	207012	64644	143496
19/3610	COCHIN RECLAIMS & TREAD RUBBER PVT. LTD.	HT I	75540	17650	48220	47690	6330	42800	56080	12640	60970	64080	17010	42860	50530	4540	44750
23/2332	COMMON FACILITY SERVICE CENTRE	HT I	22635	738	5142	16881	273	642	12186	387	1191	28536	438	5193	10566	309	1215
10/1020	COMMONWEALTH TILES, FEROKE	HT I	28356	912	1866	26778	966	1962	29280	1068	1842	28758	1044	2016	26220	888	1734
18/336	CO-OPERATIVE SPINNING MILLS,KOLLAM	HT I	165460	55280	90100	178000	54280	107680	219940	75920	138740	176700	51120	87400	206140	56540	104580
11/4191	CO-RUBBER CRUMB FACTORY	HT I	23649	5259	16032	1152	300	780	29310	4116	22701	23802	1482	17850	1212	315	747
7/4320	CRESCENT CEMENTS	HT I	5848	592	1168	4848	696	1224	2928	656	944	31568	848	1168	8448	608	1360
5/552	CRESCENT CRUMB (P) LTD	HT I	49503	16152	28614	46950	14040	28950	45042	14850	26238	33033	10269	19083	44574	13338	27849
5/535	CRUMB RUBBER FACTORY (KCRMF)	HT I	37752	9452	20412	25452	6964	14440	35652	7436	15832	32556	8580	16344	29192	7128	15296
31/4040	D.C MILLS PVT LTD, PATHIRAPPALLY	HT I	82144	25760	36968	66168	11512	32992	36152	7896	10496	62272	18560	25544	56064	17184	27280
32/3574	D.C. BOOKS	HT I	7902	1248	1335	4946	886	1386	7044	1394	1768	8100	1239	1335	5890	952	1298
31/3742	D.C.MILLS	HT I	9828	588	1436	3252	312	840	3772	932	868	8336	408	1244	3252	312	840
13/3278	DANSON MOULDS (P) LTD.	HT I	50697	14190	23517	56442	14724	28581	57678	17418	29124	54372	14070	25458	56187	13929	28560
31/3411	DC MILLS (P) LTD	HT I	64025	3370	21085	52660	2235	17560	66150	11935	9110	56855	3650	21850	45720	1445	15215
17/5178	DELTA GRANITES & SAND	HT I	18336	364	288	14956	984	1040	36200	1012	12896	19424	1920	1816	21540	932	980
9/4157	DESHABHIMANI PRINTING&PUBLSHG. HOUSE LTD	HT I	4660	1592	5704	4472	1300	5328	4206	1474	6006	5094	1626	5922	4954	1346	5710
4/4574	DETILISH RUGS	HT I	13960	1234	8150	13632	314	9236	17240	4890	3308	15856	1482	10170	11350	416	7754
30/4598	DIMESCO FOOT CARE INDIA (P) LTD.	HT I	16851	2067	423	16743	489	471	21408	2469	438	16767	2580	1980	20103	243	3372
8/4365	DIVINE GASES PVT.LTD	HT I	33066	11662	21776	76184	3920	9934	35286	11912	22164	35620	11984	22228	28554	6172	21030
24/2419	DUROFLEX COIR INDUSTRIES (P) LTD	HT I	17540	5880	7992	18672	5464	7616	18496	6364	4692	19364	5720	8524	18780	3480	1728
5/4605	DYNAMIC TECHNO MEDICALS PVT. LTD.	HT I	23781	3306	4512	24075	3243	4491	27999	3597	5073	24909	3066	4284	24666	2862	4242

Annexure-3

Month wise energy consumption details of HT Category (units)

	HT I	January-10			February-08			February-09			February-10			Mar-08		
		Zone-A	Zone-B	Zone-C	Zone-A	Zone-B	Zone-C	Zone-A	Zone-B	Zone-C	Zone-A	Zone-B	Zone-C	Zone-A	Zone-B	Zone-C
4/4129	A.C. POLYMER INDUSTRIES	45237	16086	32799	44253	18180	34785	41619	11646	27555	36414	12849	26295	40989	14856	30891
1/154	A.P. STEEL RE-ROLLING MILLS	502048	31552	367232	512768	32832	405856	353056	14336	370624	512384	35968	369504	529152	74240	399712
4/419	ACHOOR ESTATE	81340	26560	53260	47470	7660	13180	86090	12480	24790	52760	12610	22800	47090	6870	6750
7/4577	ACTIVE CHARS PVT LTD	32872	12480	23932	17464	6364	11940	20340	6216	15508	33796	13012	26028	21400	7612	15252
31/3314	AGROWOOD ANDAMAN TIMBER INDUSTRIES	31338	2208	4296	33198	2838	5346	21660	810	1668	27006	1878	3510	29490	2952	5544
13/1331	AHAMMED ROLLER FLOUR MILLS (P)LTD	47634	2277	34620	43893	1608	27423	39492	1464	30966	47115	2370	30111	48591	1782	23121
7/3752	AISWARYA STEELS PVT. LTD.	38064	2202	6312	35262	10710	4392	34536	1032	12348	43200	1764	6888	37278	12330	3108
19/4279	AKAY FLAVOURS & AROMATICS PVT. LTD.	33740	9880	21500	49116	17512	31484	28608	7392	18248	30704	9716	19676	52444	16896	36332
26/2667	AKAY FLAVOURS AND AROMATICS LTD	49443	15261	29541	59013	18246	33747	43770	11574	24288	35169	11379	19764	59553	17526	34281
10/3999	AKG MEMORIAL PRINTING& PUBLG CO (P) LTD,	8862	2564	14276	7126	2558	10054	7818	2628	12608	9014	2576	13510	7836	2698	10510
29/4508	AL AMEEN CRUSHER	30732	1696	1144	16744	516	900	24416	1216	1092	31068	832	1148	27688	796	1144
7/712	ALAGAPPA TEXTILES LTD. (NTC)	505920	164880	296970	510570	171720	338160	480690	126000	303930	509070	155880	289500	510060	175200	317610
5/530	ALAMPALLY BROTHERS LTD	26964	9768	9243	28164	7062	7482	24657	7098	10368	27630	9189	9162	29022	8256	9102
31/4566	ALLEPPEY COMPANY LTD	10044	3012	3826	16882	4926	10668	7426	2000	2728	10250	3344	3572	15252	3972	4584
25/4526	ALLEPPEY LATEX (P) LTD.	10320	3812	7318	10102	4156	4362	13226	3408	552	9524	1688	4520	14190	5450	9050
2/3561	ALLEPPEY CO-OP SPINNING MILLS LTD	95766	31347	58976	90246	25284	54402	71904	16686	34686	91512	31650	55620	74952	17748	40098
15/1958	ALLIANCE GRAIN PRODUCTS (P) LTD	50433	2403	2247	36408	2412	1212	33300	1041	1059	33777	378	474	40800	2553	2568
32/3482	AL-MADEENA GRANITE METAL& CEMENT FACTORY	9897	1932	879	8613	75	237	5712	1119	681	7356	1488	933	10017	183	1284
9/3873	ALPHS VENEERS,TALAPADY	4258	914	1046	2292	364	844	1734	302	744	5118	1014	1010	1258	346	812
8/4307	ALWAYE METALS & ALLOYS PVT LIMITED	22209	5499	3537	49863	1401	3555	37659	10215	3786	33000	10410	4527	29943	4557	16401
21/2114	ALWAYE RUBEX (P) LTD	53004	15384	29644	49472	17984	30976	41600	12024	23248	49076	16164	27428	51796	17608	29564
20/2034	ALWAYE TECHNO RUBBERS	26262	2310	21024	28440	11340	21726	23088	990	15558	25584	2334	21672	26376	6492	21126
6/621	AMBANAD ESTATE	4593	1263	1443	3951	1284	1338	1365	579	855	3891	861	933	8100	2718	2982
6/3728	AMRUT DISTILLERIES LTD.	6612	494	826	11064	976	1052	5188	406	872	5806	592	928	10232	762	1034
28/2858	ANAND OIL & EXTRACTIONS LTD.	38682	13395	27234	22359	7935	17325	9885	807	7914	23799	8007	16884	10023	3945	9111
14/1420	ANAND WATER METER MFG CO (27/14/1420)	6204	63	222	5481	60	117	4542	60	189	6813	75	258	5352	63	126
18/4557	ANNS IND FLAVOURS	6884	466	992	912	210	444	1503	378	756	7820	624	528	870	204	432
4/414	ARAPETTA ESTATE	52036	15212	25972	25260	8572	11172	8892	3004	3060	48480	14736	22408	23576	7156	8896
17/3941	ARCH PLY N BOARDS	1250	578	1474	28326	8676	17732	23496	5608	6436	1156	352	906	25692	7622	16458
27/3391	ARIKKAT OIL INDUSTRIES	2079	678	1878	636	231	516	1077	246	453	2061	900	1734	759	270	579
18/4183	ARJUNA NATURAL EXTRACTS LTD.	20552	6314	11724	16596	5068	9324	15306	3746	9256	20684	6516	12520	13866	4156	7476
17/1551	ARKAY ARC INDUSTRIES	5342	110	632	4668	78	530	5314	78	516	5218	106	560	5178	84	538
18/1038	ARNAKAL ESTATE	144336	43968	83388	120144	36588	63012	79332	18492	41268	104460	28752	60306	133650	46506	83190
25/4313	ARYA VAIDYA PHARMACY(COIMBATORE) LTD	41860	5360	7972	18576	5650	10132	14854	1136	9150	38700	5032	7908	21496	6926	12080
10/4042	ASHIQUE CHEMICALS AND COSMETICS	24060	3069	1278	16197	4197	1776	22767	4878	6222	26541	3336	1221	23091	7515	3228
13/3277	ASHIQUE EXPORTS (P) LTD	15438	1998	1434	7596	1110	1476	14250	4716	6402	13728	1848	1494	9018	2850	1866
30/3117	ASPINWAL (TRAVANCORE) LTD	3711	696	996	3114	630	957	2784	480	822	3045	570	864	3066	657	1053
13/1361	AVT NATURAL PRODUCTS LTD	145560	50730	100270	139340	44270	76280	132825	35901	67918	141720	50380	98290	131720	44460	75630
5/518	BALIAPATTAM TILE WORKS	7305	489	1089	34959	3378	3792	30933	2106	3408	17493	738	942	30567	3510	3654
15/4645	BENZY FOODS AND BEVERAGES PVT LTD	9972	1942	1316	12662	1790	1198	2854	870	8912	9822	1558	1358	12140	1808	1382
31/3419	BERTECH (P) LTD	19269	6381	11607	30684	9735	18816	34695	9069	22725	20835	5583	2901	30411	8649	18900
26/2625	BEST BRICKS & TILES	11589	270	468	12774	207	501	6045	141	387	8586	261	393	12612	273	597
11/4124	BEST GRANITES, KOTHACHIRA	129310	24640	13020	84032	9472	3512	80544	7208	4000	119870	19510	12140	74184	5240	3432
4/4604	BEST READY MIX	7382	1304	1200	7382	2144	2604	6268	1144	1188	7592	1562	1500	7856	1794	1556
31/3430	BETA GRANITE PVT LTD	9882	172	322	7204	138	256	9410	154	316	10696	162	296	6152	154	274
29/2946	BHARATHY RUBBER INDUSTRIES	414	120	210	297	81	174	339	84	171	501	90	189	336	90	183
32/3533	BHAVANI TEA & PRODUCE CO. LTD.	7470	2232	3531	7245	2337	3693	4083	1053	2289	4560	1263	2166	6858	1779	3183
15/1512	BINANI INDUSTRIES(P)LTD	4830	1200	3088	7470	2386	4982	5602	1380	4110	4132	1552	2542	7746	2156	5628
20/3913	BODY GEAR INTERNATIONAL (PVT) LTD	13608	267	552	14412	312	507	11064	219	486	11838	234	510	14706	360	588
8/718	BOYCE ESTATE	12334	956	1728	5188	1022	1324	6786	618	740	9016	1126	1754	5192	734	940

Annexure-3

Month wise energy consumption details of HT Category (units)

		January-10			February-08			February-09			February-10			Mar-08			
		HT I	Zone-A	Zone-B	Zone-C	Zone-A	Zone-B	Zone-C	Zone-A	Zone-B	Zone-C	Zone-A	Zone-B	Zone-C	Zone-A	Zone-B	Zone-C
26/2639	BPL INDIA LTD	HT I	15294	996	1794	7970	1024	1360	6098	528	1054	13940	1168	2100	7554	1168	1452
10/904	BPL LIMITED	HT I	25884	7620	11800	28792	8548	12508	26576	7880	15620	24808	7900	14528	26268	7808	12976
26/2640	BPL SYSTEMS & PROJECTS LTD	HT I	40464	8028	15084	50364	7944	11778	41418	7368	13908	41412	7896	15162	62220	10440	15834
27/4480	BRAHMIN ENTERPRISES	HT I	7624	364	690	3390	162	364	5662	292	518	7840	480	926	2986	190	380
28/2815	BRISTOL BOATS	HT I	1460	216	440	1848	220	444	1688	180	368	1432	188	400	1556	208	404
11/1934	BROTHERS RUBBER MILLS	HT I	9314	142	6812	7614	118	5942	7846	82	5824	7398	184	7764	9068	192	5820
10/1025	CALICUT TILE CO.	HT I	23832	444	909	24444	450	1020	23151	426	918	24381	387	825	25476	480	999
4/450	CALIFER POLYMERS (P) LTD	HT I	25287	7026	9300	20511	3513	3921	25497	2487	11670	23718	7803	12321	16575	3036	3459
7/641	CANARA PAPER MILLS LTD.	HT I	55362	17682	39372	69444	21192	45582	54342	14826	37848	51060	15906	35964	64728	21018	45912
5/515	CANNANORE CO-OPERATIVE SPINNING MILLS	HT I	224376	67848	119940	207240	60852	106560	200940	56232	105120	214836	64344	109656	216804	65544	110292
25/3994	CHAKKIATH MOODA AGRO PRODUCTS	HT I	31875	12384	24978	27147	8964	20652	24138	8238	18354	28344	10326	20736	38175	13740	28434
25/3283	CHAKKIATH MOODA EXTRACTIIONS	HT I	23396	7436	13524	20364	6700	12012	17444	4864	10516	20012	6552	11968	21052	6944	12560
5/523	CHANDANAPALLY ESTATE	HT I	25551	8022	11418	21468	6354	6588	20418	6372	9234	18438	6357	7350	18231	5052	4365
5/510	CHANDRAMALAI ESTATE	HT I	30508	8228	7048	32724	4494	2652	19908	1916	1248	25136	3396	1820	22956	2922	1992
7/3632	CHARANKATTU COIR MFG. CO. (P) LTD	HT I	4208	772	920	3964	52	596	3332	488	652	3848	664	800	3692	52	572
21/3382	CHEERAMALLI EXTRUSIONS (P) LTD	HT I	5364	1752	4068	282	102	210	7824	1422	2004	5520	1626	2820	252	96	186
4/422	CHEMBRA PEAK ESTATE	HT I	2922	1368	1224	2490	1302	1344	3024	1260	1212	2538	1098	1110	2814	1344	1488
16/1607	CHIDAMBARAM TEA ESTATE	HT I	27744	4476	16530	29067	4182	8799	17376	1599	1584	22158	3432	8739	30438	4437	11580
10/4055	CHINTHA PRINTING & PUBLISHING CO PVT LTD	HT I	5822	2420	8752	5204	2060	5676	6300	2116	8648	5780	2334	8212	5502	2256	6292
32/3524	CHIRACKAL AGRO MILLS	HT I	28269	10398	14802	54343	0	0	27735	7344	13899	18555	7698	9174	32171	11107	16462
13/3992	CHIRAYINKEEZHU-ANJENGO COIR MATS&MATTING	HT I	1185	189	318	2337	210	489	2424	198	465	981	132	294	3159	240	522
5/4213	CHLOROPLAST	HT I	32978	10472	21952	30482	9352	18588	25134	6784	17680	30690	9762	19758	30528	9348	19534
4/420	CHULLIKA ESTATE	HT I	56517	7731	36031	41931	5761	26074	26702	2305	3674	49319	5442	25081	46038	6381	23310
4/415	CHUNDALE ESTATE	HT I	50830	15230	23160	115180	31430	23460	39880	9860	9910	52220	17510	30480	100210	28700	29410
22/2262	COCHIN CEMENTS LTD (31/22/2262)	HT I	173120	6660	80040	94280	5200	90740	154760	6520	72000	135920	6680	98660	139440	9580	118960
31/3306	COCHIN KAGAS LTD	HT I	78520	24960	45510	108080	36730	63210	30210	9500	15560	49630	19770	30310	137160	52960	87790
7/3948	COCHIN KAGAZ LTD. UNIT-II	HT I	173732	62556	113308	240924	83136	169536	256074	71396	192634	188812	69212	136032	185844	65928	129696
22/3272	COCHIN MALABAR ESTATES&INDUSTRIES(31/22)	HT I	11982	3258	6432	9292	2192	3376	9124	1138	2150	10448	1686	2638	10056	2102	2768
18/1856	COCHIN MINERALS & RUTILE LTD	HT I	201252	72564	148680	216540	78648	164376	195144	57612	132852	194424	67464	139248	256848	89424	176316
19/3610	COCHIN RECLAIMS & TREAD RUBBER PVT. LTD.	HT I	52170	12330	60680	62830	16890	43000	45610	4790	39990	63640	12890	59500	63670	16770	49530
23/2332	COMMON FACILITY SERVICE CENTRE	HT I	5514	678	2178	20529	876	474	5733	234	930	10623	375	1191	23520	1041	567
10/1020	COMMONWEALTH TILES, FEROKE	HT I	32076	1170	1698	27984	876	1740	29880	984	1560	24960	804	1488	26772	990	1902
18/336	CO-OPERATIVE SPINNING MILLS,KOLLAM	HT I	226000	78860	134560	160420	53980	85420	168360	51580	92540	211500	70980	126320	285183	0	0
11/4191	CO-RUBBER CRUMB FACTORY	HT I	27654	5958	23433	25050	507	17757	1377	279	699	19434	1794	16491	19068	2043	14877
7/4320	CRESCENT CEMENTS	HT I	3616	600	1544	28672	1008	12888	7184	568	1392	6104	584	1120	10808	752	1120
5/552	CRESCENT CRUMB (P) LTD	HT I	42270	14598	25623	46497	14271	25161	33744	9036	20688	37683	12750	22008	39417	11826	20307
5/535	CRUMB RUBBER FACTORY (KCRMF)	HT I	41056	9004	16568	7800	2100	3892	17776	4772	8656	12084	3372	6676	28884	6248	14168
31/4040	D.C MILLS PVT LTD, PATHIRAPPALLY	HT I	94608	32048	51960	63744	20480	31560	32248	7624	10448	92864	31776	46488	64008	15200	30064
32/3574	D.C. BOOKS	HT I	6392	1320	1812	7668	1197	1278	5240	878	1252	6110	1158	1640	7566	1323	1239
31/3742	D.C.MILLS	HT I	4688	1092	1012	7244	440	1092	2288	276	680	4484	984	692	7272	536	1120
13/3278	DANSON MOULDS (P) LTD.	HT I	54642	15300	24897	52206	15288	25437	56562	13716	23964	47436	13725	22068	41709	11895	19167
31/3411	DC MILLS (P) LTD	HT I	47955	9665	12115	50915	3635	20985	43040	1965	11365	46205	8710	11945	49880	3515	18625
17/5178	DELTA GRANITES & SAND	HT I	34040	2328	9736	18340	1516	1108	25424	844	1940	37508	2856	11820	18668	1844	1364
9/4157	DESHABHIMANI PRINTING&PUBLSHG. HOUSE LTD	HT I	4804	1674	6798	4724	1520	4796	4698	1268	5814	3666	1292	5244	5000	1764	5610
4/4574	DETILISH RUGS	HT I	17746	4746	10542	16706	1508	12700	12260	812	8904	14686	3726	8498	14092	1578	8426
30/4598	DIMESCO FOOT CARE INDIA (P) LTD.	HT I	21240	2925	429	17478	2142	2136	16797	186	669	21783	5064	1233	18504	3039	432
8/4365	DIVINE GASES PVT.LTD	HT I	35474	12218	24748	32582	11232	21974	33292	7906	21810	30128	10536	22208	31830	10890	19930
24/2419	DUROFLEX COIR INDUSTRIES (P) LTD	HT I	19408	5196	3112	16924	5708	6700	18336	5060	3196	17640	4232	1108	15864	5188	4696
5/4605	DYNAMIC TECHNO MEDICALS PVT. LTD.	HT I	26016	3345	4401	24813	3183	4047	23550	2481	3594	26988	3231	4413	22368	3090	4053

Annexure-3								
Month wise energy consumption details of HT Category (units)								
			Mar-09			Mar-10		
		HT I	Zone-A	Zone-B	Zone-C	Zone-A	Zone-B	Zone-C
4/4129	A.C. POLYMER INDUSTRIES	HT I	44139	15975	32643	25161	8574	17238
1/154	A.P. STEEL RE-ROLLING MILLS	HT I	333216	14720	390400	495040	36352	352544
4/419	ACHOOR ESTATE	HT I	64660	11380	13480	60270	11550	23050
7/4577	ACTIVE CHARs PVT LTD	HT I	21020	7536	15816	30368	12528	23880
31/3314	AGROWOOD ANDAMAN TIMBER INDUSTRIES	HT I	27876	2760	5538	28470	1824	3192
13/1331	AHAMMED ROLLER FLOUR MILLS (P)LTD	HT I	42513	1869	31935	34527	2232	27099
7/3752	AISWARYA STEELS PVT. LTD.	HT I	34740	1314	15396	39222	2064	6282
19/4279	AKAY FLAVOURS & AROMATICS PVT. LTD.	HT I	33616	9524	21744	37600	11636	24140
26/2667	AKAY FLAVOURS AND AROMATICS LTD	HT I	55785	12369	33090	56298	17247	30450
10/3999	AKG MEMORIAL PRINTING& PUBLG CO (P) LTD,	HT I	10462	3196	15350	8628	2912	14032
29/4508	AL AMEEN CRUSHER	HT I	27372	2648	1544	30420	624	868
7/712	ALAGAPPA TEXTILES LTD. (NTC)	HT I	565110	179430	372540	538440	169860	314310
5/530	ALAMPALLY BROTHERS LTD	HT I	23295	8622	11739	27270	9138	8724
31/4566	ALLEPPEY COMPANY LTD	HT I	8080	2162	3370	11096	3726	3734
25/4526	ALLEPPEY LATEX (P) LTD.	HT I	17054	1974	692	9836	3618	7470
2/3561	ALLEPPEY CO-OP SPINNING MILLS LTD	HT I	79992	20016	36954	106806	35160	65328
15/1958	ALLIANCE GRAIN PRODUCTS (P) LTD	HT I	36600	540	627	37548	1245	780
32/3482	AL-MADEENA GRANITE METAL& CEMENT FACTORY	HT I	10812	1944	666	10086	2070	774
9/3873	ALPHS VENEERS,TALAPADY	HT I	818	344	802	5054	894	934
8/4307	ALWAYE METALS & ALLOYS PVT LIMITED	HT I	35523	11136	5313	36342	11484	4440
21/2114	ALWAYE RUBEX (P) LTD	HT I	57592	17084	29124	51896	12488	28216
20/2034	ALWAYE TECHNO RUBBERS	HT I	22500	1056	15426	20760	1572	15942
6/621	AMBANAD ESTATE	HT I	1530	693	972	2784	825	834
6/3728	AMRUT DISTILLERIES LTD.	HT I	5300	422	714	6976	570	1056
28/2858	ANAND OIL & EXTRACTIONS LTD.	HT I	13314	1212	9339	15774	5288	11458
14/1420	ANAND WATER METER MFG CO (27/14/1420)	HT I	5301	66	219	7020	84	240
18/4557	ANNS IND FLAVOURS	HT I	3240	486	552	6404	534	422
4/414	ARAPETTA ESTATE	HT I	8568	3052	3396	57072	15564	28396
17/3941	ARCH PLY N BOARDS	HT I	21710	6038	6744	792	310	890
27/3391	ARIKKAT OIL INDUSTRIES	HT I	1275	321	513	2121	1017	1761
18/4183	ARJUNA NATURAL EXTRACTS LTD.	HT I	17690	5016	9334	23336	6816	12896
17/1551	ARKAY ARC INDUSTRIES	HT I	4764	80	688	4776	124	280
18/1038	ARNAKAL ESTATE	HT I	91698	12834	63510	90360	32562	52926
25/4313	ARYA VAIDYA PHARMACY(COIMBATORE) LTD	HT I	17116	736	9310	46240	5424	9560
10/4042	ASHIQUE CHEMICALS AND COSMETICS	HT I	22809	3675	2862	26421	3093	1116
13/3277	ASHIQUE EXPORTS (P) LTD	HT I	16218	4836	7998	16248	2580	1626
30/3117	ASPINWAL (TRAVANCORE) LTD	HT I	3111	543	888	3465	624	909
13/1361	AVT NATURAL PRODUCTS LTD	HT I	150050	50080	95370	152760	54570	109450
5/518	BALIAPATTAM TILE WORKS	HT I	32874	2325	3474	34422	2382	3222
15/4645	BENZY FOODS AND BEVERAGES PVT LTD	HT I	5886	446	9880	8184	622	1894
31/3419	BERTECH (P) LTD	HT I	36582	11253	22539	26883	9705	5142
26/2625	BEST BRICKS & TILES	HT I	11364	222	459	11697	132	1491
11/4124	BEST GRANITES, KOTHACHIRA	HT I	89568	7320	3872	117690	14280	14240
4/4604	BEST READY MIX	HT I	6978	1540	1244	9138	2162	2410
31/3430	BETA GRANITE PVT LTD	HT I	10896	160	276	8960	178	342
29/2946	BHARATHY RUBBER INDUSTRIES	HT I	369	141	189	1764	111	207
32/3533	BHAVANI TEA & PRODUCE CO. LTD.	HT I	6000	1824	3612	6573	1491	2181
15/1512	BINANI INDUSTRIES(P)LTD	HT I	6282	1534	4448	4750	1602	2898
20/3913	BODY GEAR INTERNATIONAL (PVT) LTD	HT I	13899	279	522	14823	357	636
8/718	BOYCE ESTATE	HT I	4626	524	788	5608	732	1248

Annexure-3								
Month wise energy consumption details of HT Category (units)								
		Mar-09			Mar-10			
	HT I	Zone-A	Zone-B	Zone-C	Zone-A	Zone-B	Zone-C	
26/2639	BPL INDIA LTD	HT I	6854	652	1224	16644	1570	1840
10/904	BPL LIMITED	HT I	26120	8376	14124	33740	10424	20488
26/2640	BPL SYSTEMS & PROJECTS LTD	HT I	57072	10950	16932	48954	9072	16998
27/4480	BRAHMIN ENTERPRISES	HT I	6354	406	694	9064	834	864
28/2815	BRISTOL BOATS	HT I	1892	212	420	1580	244	448
11/1934	BROTHERS RUBBER MILLS	HT I	8860	118	7160	7344	230	7568
10/1025	CALICUT TILE CO.	HT I	25011	513	996	24081	504	1008
4/450	CALIFER POLYMERS (P) LTD	HT I	23310	1188	9126	23784	6384	11922
7/641	CANARA PAPER MILLS LTD.	HT I	55656	14898	37416	44160	14610	33708
5/515	CANNANORE CO-OPERATIVE SPINNING MILLS	HT I	233844	67356	118872	231348	65988	116748
25/3994	CHAKKIATH MOODA AGRO PRODUCTS	HT I	29124	10479	22713	34746	12606	25203
25/3283	CHAKKIATH MOODA EXTRACTIIONS	HT I	25516	7932	15448	17864	5888	10752
5/523	CHANDANAPALLY ESTATE	HT I	17688	4905	6315	17604	4674	5157
5/510	CHANDRAMALAI ESTATE	HT I	30644	3568	2036	29692	3036	1736
7/3632	CHARANKATTU COIR MFG. CO. (P) LTD	HT I	3496	444	704	4024	712	868
21/3382	CHEERAMALLI EXTRUSIONS (P) LTD	HT I	12456	2802	2268	2004	1110	1542
4/422	CHEMBRA PEAK ESTATE	HT I	3312	1440	1392	2970	1242	1236
16/1607	CHIDAMBARAM TEA ESTATE	HT I	16278	1653	1566	22299	3204	5229
10/4055	CHINTHA PRINTING & PUBLISHING CO PVT LTD	HT I	7216	2578	8450	5756	2440	8220
32/3524	CHIRACKAL AGRO MILLS	HT I	32610	9519	15630	21003	7626	7737
13/3992	CHIRAYINKEEZHU-ANJENGO COIR MATS&MATTING	HT I	1722	171	378	642	138	321
5/4213	CHLOROPLAST	HT I	35696	10910	23010	34322	11688	24412
4/420	CHULLIKA ESTATE	HT I	28301	3043	4898	56566	6420	29310
4/415	CHUNDALE ESTATE	HT I	21960	5690	8770	57260	18740	32050
22/2262	COCHIN CEMENTS LTD (31/22/2262)	HT I	119840	7600	105020	197720	9520	115620
31/3306	COCHIN KAGAS LTD	HT I	141180	41440	71940	98910	36010	58860
7/3948	COCHIN KAGAZ LTD. UNIT-II	HT I	107016	33280	74022	138736	46384	93366
22/3272	COCHIN MALABAR ESTATES&INDUSTRIES(31/22)	HT I	8252	1136	2132	11242	1772	2230
18/1856	COCHIN MINERALS & RUTILE LTD	HT I	210840	69984	151956	196944	68784	141624
19/3610	COCHIN RECLAIMS & TREAD RUBBER PVT. LTD.	HT I	48740	4470	43500	69030	22390	58120
23/2332	COMMON FACILITY SERVICE CENTRE	HT I	6966	276	648	9711	336	486
10/1020	COMMONWEALTH TILES, FEROKE	HT I	34500	954	1680	30192	930	1644
18/336	CO-OPERATIVE SPINNING MILLS,KOLLAM	HT I	163060	52560	85620	236540	83140	148080
11/4191	CO-RUBBER CRUMB FACTORY	HT I	5412	426	2502	12093	891	11334
7/4320	CRESCENT CEMENTS	HT I	7000	704	1392	3560	640	1304
5/552	CRESCENT CRUMB (P) LTD	HT I	20619	6930	12171	33756	9531	19098
5/535	CRUMB RUBBER FACTORY (KCRMF)	HT I	15016	4216	8848	19548	5464	9188
31/4040	D.C MILLS PVT LTD, PATHIRAPPALLY	HT I	53768	15640	23544	84848	26912	35712
32/3574	D.C. BOOKS	HT I	6996	1224	1558	7290	1392	2006
31/3742	D.C.MILLS	HT I	2904	296	768	4100	1080	900
13/3278	DANSON MOULDS (P) LTD.	HT I	61557	16776	30342	44208	10575	13470
31/3411	DC MILLS (P) LTD	HT I	47470	3970	6195	47055	7535	9905
17/5178	DELTA GRANITES & SAND	HT I	22288	784	4808	37972	4500	7868
9/4157	DESHABHIMANI PRINTING&PUBLSHG. HOUSE LTD	HT I	5184	1528	6108	4340	1556	5506
4/4574	DETILISH RUGS	HT I	5270	810	1324	21416	5102	13968
30/4598	DIMESCO FOOT CARE INDIA (P) LTD.	HT I	16908	282	366	22104	4005	522
8/4365	DIVINE GASES PVT.LTD	HT I	31598	10058	22014	35824	11636	25396
24/2419	DUROFLEX COIR INDUSTRIES (P) LTD	HT I	18932	3524	2984	17620	3008	1108
5/4605	DYNAMIC TECHNO MEDICALS PVT. LTD.	HT I	27339	2757	3843	29775	3756	4851